

Making a log with Im

Initial remark: Try it once with this guide in reach, afterwards this guide should not be necessary anymore.

- [Download](#) Im freeware made by DL8WAA
- After operating the contest *start Im* and click "*File>new*"

The screenshot shows the 'Header data' dialog box with the following fields and values:

- Contest:** WAG Contest (non DL) (selected)
- My callsign:** AA0AAA (circled in red)
- Category Power:** LOW
- Category Operator:** SINGLE-OP
- Category Station:** FIXED
- Category Transmitter:** ONE
- Category Assisted:** NON-ASSISTED
- Country file:** C:\ProgramData\Gelbland\LM\C
- Station description:** (empty)
- Operator list:** (empty)
- E-Mail address:** (empty)
- Contest Club:** (empty)
- Name:** (empty)
- Spec. belonging, e.g. DOK:** (empty)
- Spec. QTH, e.g. ARRL section:** DX
- Mail address:** (empty)
- Soapbox comment (max. 255 letters):** (empty)

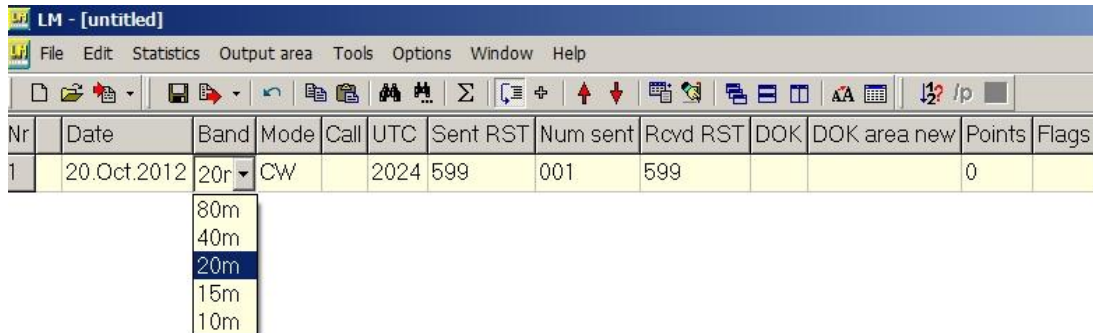
Buttons at the bottom: Load user data from file..., OK (with a green checkmark and a red arrow pointing to it), Cancel, and Help.

In the upper left box choose the contest just worked (in this example WAG as non-DL station), add the call transmitted during this contest in **MyCall**, choose between single or multioperator and choose the power level you used, then click "**ok**" **at the bottom**. You can ignore all other fields for now – but of course you may fill them out, especially operator call(s) if you have used a club- or contest-call as single op or have been MultiOp. Also soapbox comments are welcome telling about your station, antennas and interesting moments during the contests.

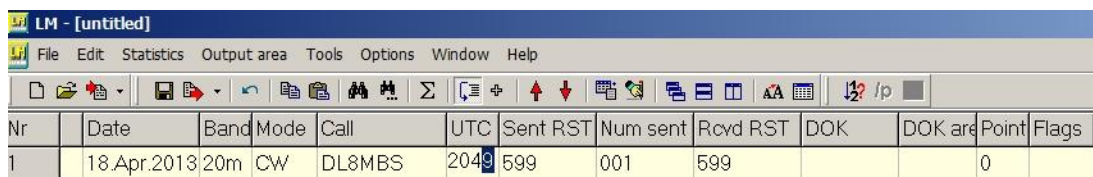
The QSO input form

Select "**Edit>Standard edit mode**" (otherwise LM inserts the actual clocktime of your PC while entering data in lm, not the real time of the QSO)

To change **date**, **band** and **mode** there are **dropdown menus** which will appear when you click on the fields, like the one you see for selection of correct band (see below). You need to click them only when date, band or mode differ from the QSO entered before.

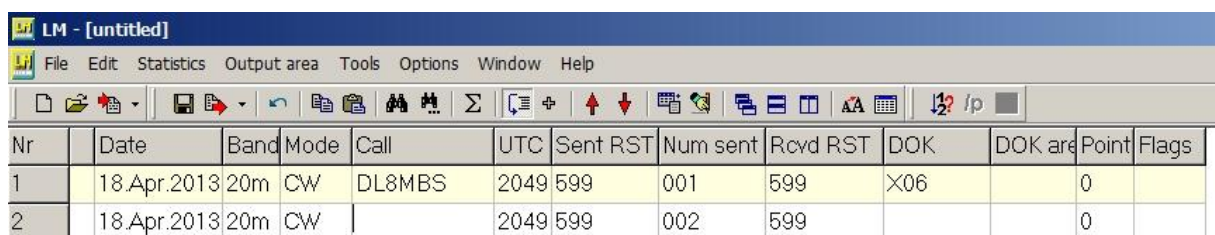


Now click on the field "call" and fill in the first callsign. Then hit the tab-key to reach the field "time" or click on it (see below). Clear it completely with **backspace** and insert the time of the QSO.



Then continue with the **Tab-key** or with mouseclick to the field for the received contest exchange. RS(T) is 59(9) by default and your sent serial number will increase by one with every new QSO-line, but you can change the preset number by clicking on the field and insert another serial number (in case of double or omitted serials during the contest – which are no problem for checking as long as they represent what was sent in the QSO). The field for exchanges vary of course from contest to contest as some require "DOK", others a serial number or even both.

After all data in the log line is entered hit **Enter** and the **Plus-sign (+)** and you will see the next line ready for you:



When you "tab" from the callsign field to the time field the cursor will place on the last digit which you then can simply overwrite, so you need not to fill in the whole four digit timestamp. If you need to change more than the last minute clear the necessary digits with **backspace**.

Now is a good time to save the log on your hard disc via menu points **File>save as...** and choose at best your call as file name, resulting in a file like AA0AAA.lmf. It is good practice to save regularly during data entry with **CTRL-S**.

Fasttrack for advanced users:

Fill out **columns** instead of rows. Hitting **Enter** i.e. after each call will place the cursor in the field for the next call. After entering all calls you will then enter all times and so on. It is faster but for a start filling out complete log lines may be more intuitive for many. But it is something to check what fits better for you.

QTC entry in WAEDC

Im also allows to enter QTCs post contest which is done even by more seasoned operators who like the flexibility and somewhat easier correction possibility by logging QTCs on paper. When WAEDC is chosen as contest the first column of a log line is initially named **QSO**. But if you click on this field in the log line you see the additional choices of **QTCsent** and **QTCrcvd** (depending whether you are in Europe, DX or operate in WAEDC RTTY the rules stipulate who can or must send and/or receive QTCs, but Im is ready for everything).

Nr	QTC	Datum	Band	Mode	Rufzeichen
1	QSO	13.Aug.2016	20m	CW	K1ZZ
2	QSO	13.Aug.2016	20m	CW	K1ZZ

Dropdown menu options for QTC field:
 QSO
 Sent
 Rcvd

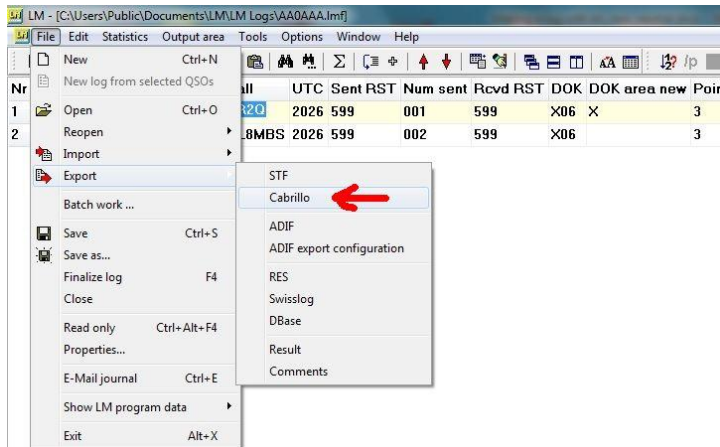
In the log line you have to fill the respective fields (Im only allows to enter data in those fields fitting to your case) which may look like this when a US station has transmitted 2 QTC to a German station:

QTC	Date	Band	Mode	Call	UTC	Sent RST	QSO number	Rcvd RST	QSO number	QTC: serial number	QTC: QSO time	QTC: QSO call	QTC: QSO number
QSO	13.Aug.2016	20m	CW	DR2Q	1945	599	123	599	005				
QSO	13.Aug.2016	20m	CW	DL8MBS	1947	599	124	599	003				
Sent QTC	13.Aug.2016	20m	CW	DL8MBS	1947					25/2	1534	S50A	723
Sent QTC	13.Aug.2016	20m	CW	DL8MBS	1947					25/2	1538	RU1A	984

For logging subsequent QSOs then click on **QSO** in the first column of the log line.

Last step - getting the logfile for submission

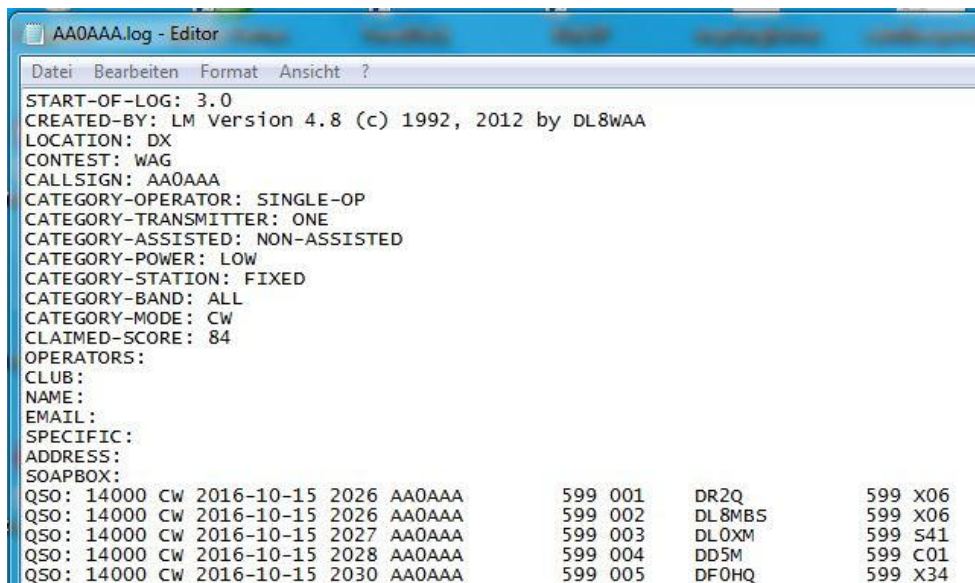
When you have inserted all QSOs hit the **F5-key** once to get the score calculated, save again with **CTRL-S** and then click in the menu "**File>Export>Cabrillo**" (see below) and choose your call used in the contest as name for the then generated file with a name like AA0AAA.log Save it on your disk where you like.



Now is a good time to also export the log in adif-format via the same menu just one item below. The adif can then be imported into your allday QSO logbook to add all contest QSOs.

Now **doubleclick the Cabrillo file**: These .log files are simple text formats like .txt formatted files and therefore should open in the basic text editor of your computer. If the PC initially should ask which program to use chose the basic text editor as standard and be done with it for all following Cabrillo files.

The opened log file should look such with a header portion containing info about contest, call and category followed by the part with the log lines of QSOs.



Check whether basic infos about call, category and power fit to your operating in the contest.

In DARC contests the category titles need NOT fit exactly with the wording for them in the

rules, as this will be done properly later in the upload dialog with the robot.

Final plea: Have a look at the log lines for obvious irregularities or missing items – to save you and the adjudicators time and nerves.

Now you are done: Save the file again and submit via the upload tool of the contest.

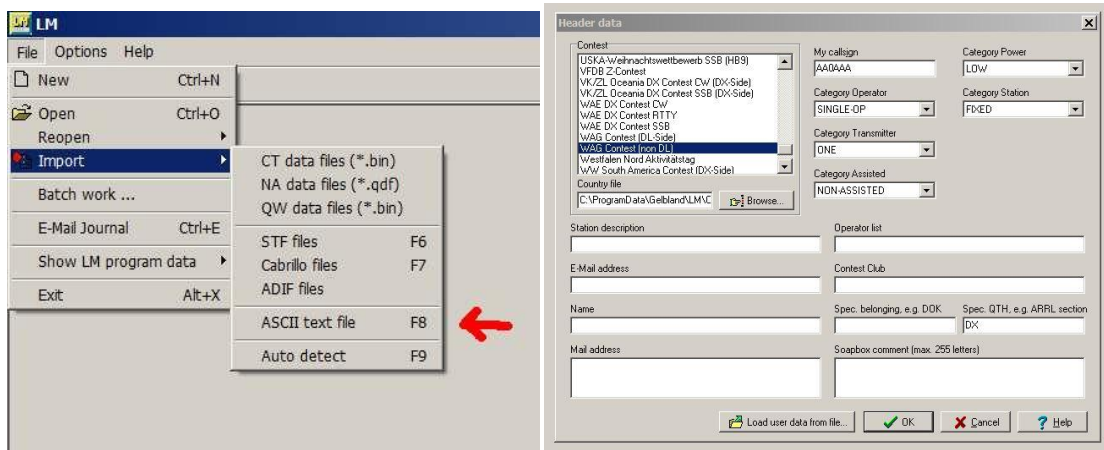
: -)

Convert any log with Im into Cabrillo format

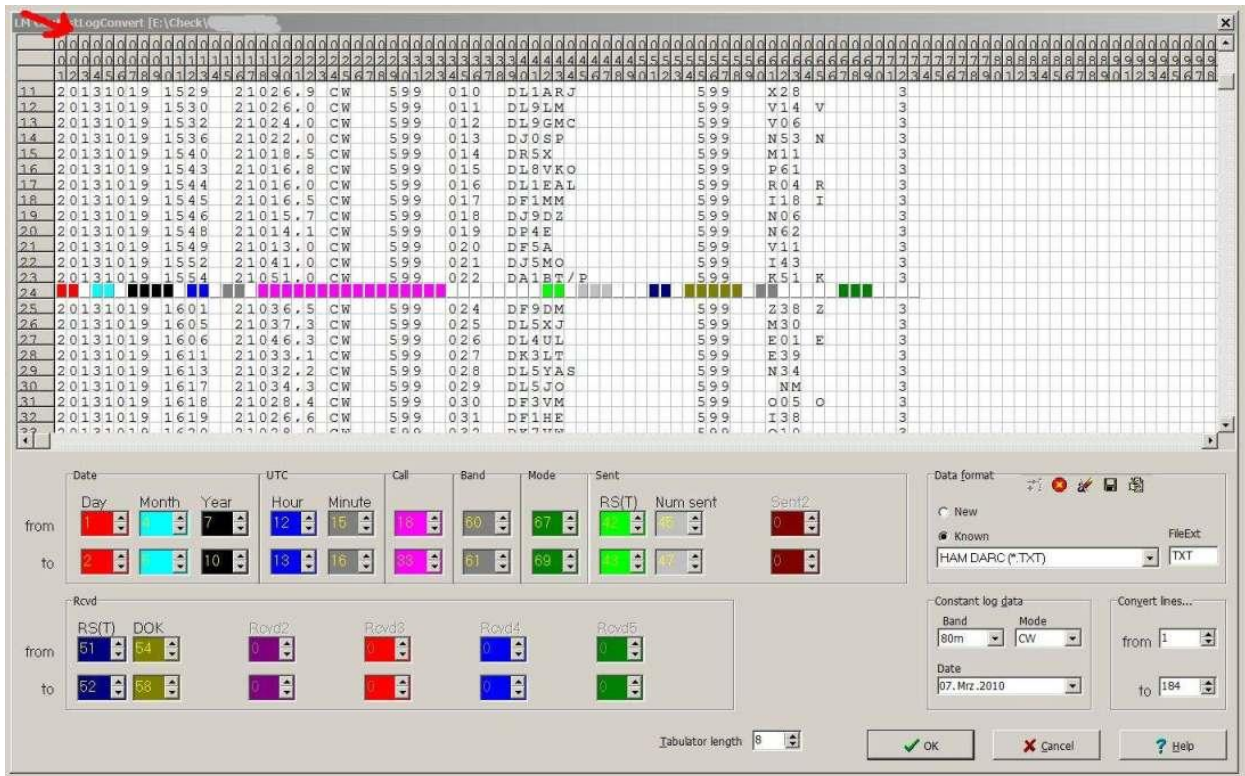
The **software Im** also allows to make files in the required format cabrillo out of logs with nearly any initial did-it-yourself arrangement of log coloumns or from the output of logging programs that cannot export cabrillo files. How it works:

Click "**file>import**" and then either choose one of the given format types (if your log comes in one of this types like swisslog or the common adif format) or choose "**ASCII-Import**".

It will open the menu shown below to choose in the upper left the contest (in this example WAG as non-DL station), the **callsign used** in the contest, single- or multi operator, powerlevel and finally "**OK**" **at the bottom**. Of course it is fine to also add soapbox comments and operators.

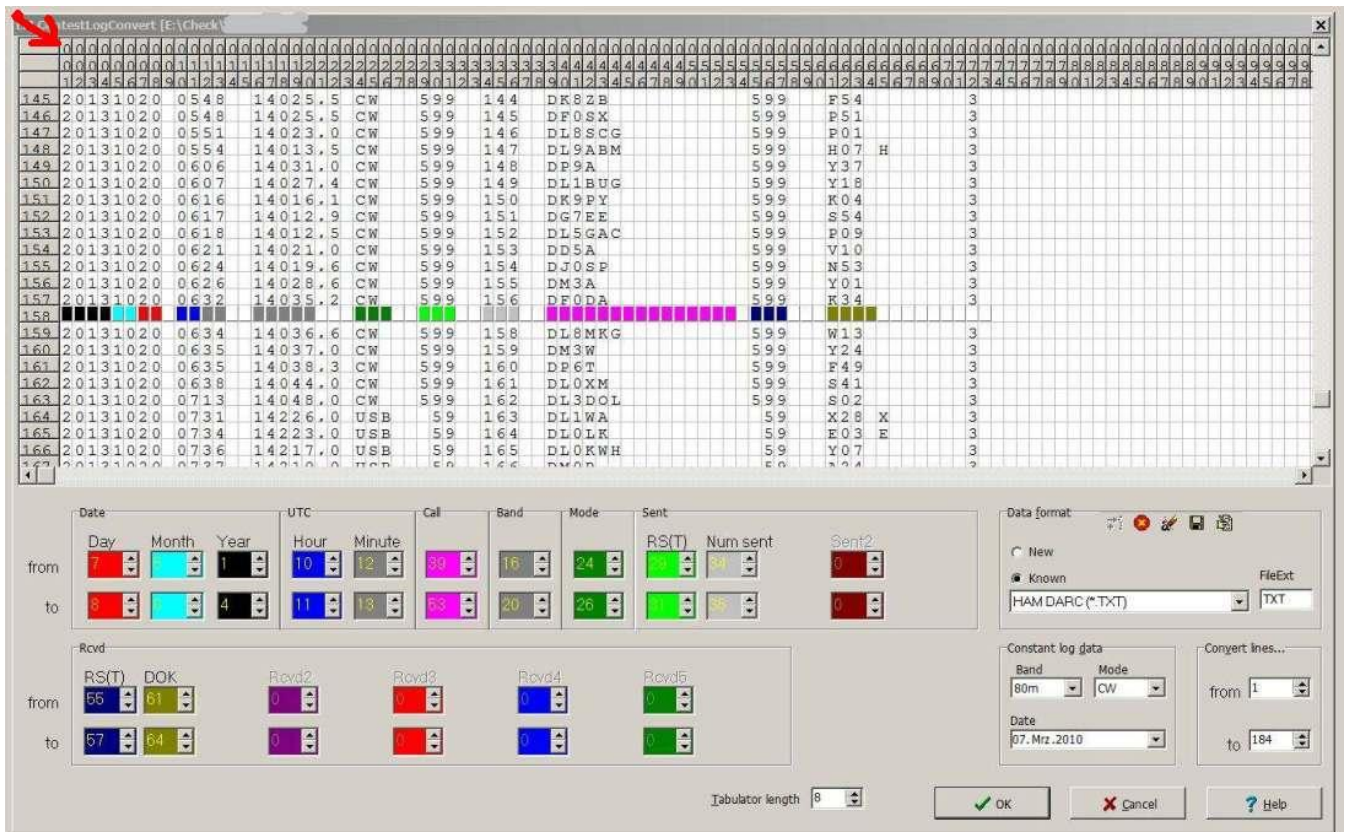


Clicking "OK" opens the real **converting-menu**, which allows to **mark and assign the columns** in the existing log to the required sequence of Cabrillo. Initially the log to be converted looks such with coloured markers unsorted scattered around:



The lower part has **coloured fields** for the respective contents like day, hour, received exchange etc. There you can insert the **number of the respective columns** for this position in your log as indicated by the number of the column shown on top of the menu (**red arrow**).

In this example the **red fields for day** have to be filled with 7 to 8; the fields for mode with 24 to 26 (be generous with the necessary field lengths to adjust to their possible size, i.e. better three columns for RST if you have worked in CW or mixed mode...), but not too much to not include letters or figures already belonging to another log-column. In this example you could use for **Call** up to column 54 (even if this length will not be needed by any callsign). The software indicates the range of your selection with markers in the colour of the respective content like call or day so that you can always check whether your selection fits. When all fields are filled it should look such - and can still be changed when you detect something when scrolling down the log:



If everything looks ok, click on "OK" (choose "no" if asked whether you want to change a specific "list"). Now a regular Im-log with its white and yellow lines should open. If it is ok, then choose "**File>export>Cabrillo**" and save the file with the used callsign as filename like AA0AA.lmf where you want to store it on your disk.

Then **doubleclick the file**, which should open in a text editor, check the informations in the header, have a look at the log lines for obvious irregularities, save again. Again: In DARC contests you need you to fill in the exact wording of the category names into the header of the Cabrillo log, as the later upload dialog will take care of setting the correct category name.

You're done :-)